

Kiwanis RMD

From: Janet Noland <rangesalida@aol.com>
Sent: Monday, February 27, 2017 9:37 PM
To: kiwanisrmd@gmail.com
Cc: marybaumfalk@gmail.com; rangesalida@aol.com; kwidger@wilburellis.com; rglover.co@gmail.com; dapalmgrn@msn.com; contact@cocmv.org; sstillings@mvcoop.com; dawn.k@fswb.com
Subject: 2017 Signature project Contest
Attachments: pdf submittal complete.pdf

Following is a summary and attached is a PDF submittal of a signature project for the Kiwanis Club of Monte Vista.

Kiwanis Club of Monte Vista
Don Noland, Sec.
rangesalida@aol.com
303-905-8468
Crane Festival Pancake Breakfast and Quilt Raffle

The Crane Festival Pancake Breakfast and Quilt Raffle has evolved into a fundraising event that also serves as a community service project. The Crane Festival committee had requests from Festival visitors to include a breakfast in the Saturday morning events at the Festival. The food vendors currently serving lunch menus were not interested in adding a breakfast menu nor in serving breakfast at 6 AM. Therefore, the Festival committee approached the Kiwanis Club of Monte Vista about providing a breakfast. The club partnered with the committee and agreed to take this on as a community service project to enhance the festival experience for attendees and at the same time raise money for other projects.

In 1998 one of our members suggested that we take advantage of our presence at the Crane Festival and have a crane quilt raffle with the primary purpose to raise funds for Key Club scholarships. Although this started as a separate fundraising project it has merged with the pancake breakfast to become one combined project.

Over the years the breakfast and the quilt raffle have become draws to the festival. Locals as well as out-of-town visitors will call the festival committee for affirmation that the breakfast will be taking place and that the quilt will be there. Even those that do not want to purchase raffle tickets want to see this year's crane quilt design.

The pancake breakfast serves 200 people and we fund one to four scholarships annually; each year approximately 50 third-graders receive dictionaries; depending on the facility visited, 20 to 80 seniors receive a card and a treat each month; 30 children received school supplies that they could not afford to buy; 18 children received Operation Christmas Child boxes.

The Kiwanis brand is incorporated into the project by banners with the Kiwanis International logo posted at the event, by posters with the logo posted at the event and in windows of businesses throughout town, and by the statements "provided by" or "presented by the Kiwanis Club of Monte Vista" in all news releases.

Don Noland, Secretary
Kiwanis Club of Monte Vista
rangesalida@aol.com

KIWANIS CLUB OF MONTE VISTA
CRANE FESTIVAL PANCAKE BREAKFAST AND QUILT RAFFLE
2017 Signature Project Recognition Submittal

- a) The Crane Festival Pancake Breakfast and Quilt Raffle fits all three categories listed in question a. The pancake breakfast portion of this project was an event instituted to provide a service to fill a void in the Crane Festival event schedule. Also the breakfast and the quilt raffle are fundraisers.
- b) There are two needs being met by this combined project. Visitors to the Crane Festival are provided the opportunity to have a wholesome breakfast on Saturday of the event and the club raises funds for community service projects and for its Key Club Scholarships.

In the late 1980s or the early 1990s, the Crane Festival Committee saw the need to make breakfast available to Festival visitors taking the early Saturday tour. They had a vendor to provide meals later in the day, but the vendor did not have a breakfast menu and they were not interested in adding breakfast items and serving at 6 AM in the morning. The Committee, being aware that the Kiwanis Club prepared a pancake breakfast for the Ski-Hi Stampede celebration in the summer, asked if we would serve breakfast at the Crane Festival.

In the mid 1980s The Kiwanis Club of Monte Vista began offering scholarships to Monte Vista High School Key Club members who were graduating seniors. As with most projects, there was a need for financing. In 19988 one of our members suggested a quilt raffle at the Crane Festival with a quilt made especially relating to the event.

- c) The population directly served by this project are the Festival visitors who had breakfast. Some of those served by the funds raised from the breakfast and the quilt raffle are the key club students who received scholarships, third-graders who received dictionaries, folks at senior centers who received cards and treats, school children who received school supplies and children who received Operation Christmas Child boxes.
- d) Children were served as listed above in the answer to question c.
- e) The impact of the project follows:
 - i) Right at 200 people are served by the pancake breakfast.
 - ii) Depending upon the year and the number of applicants, 1 to 4 Key Clubbers receive scholarships; annually approximately 50 third-graders receive dictionaries; depending on the facility visited, 20 to 80 seniors receive a card and a treat each month; 30 children received school supplies that they could not afford to buy; 18 children received Operation Christmas Child boxes.

- iii) Throughout the years 90% of the membership and 3 to 4 Key Club members participate annually.
- f) The Crane Festival Pancake Breakfast and Quilt Raffle is an annual event occurring the 2nd week of March.
- g) The Boy Scouts of America assist in the preparation and serving of the pancake breakfast.
- h) We do not have a written partnering agreement, but we have a verbal agreement with the Crane Festival Committee. Their part of the agreement is to plan and organize the Crane Festival and we are to provide the birders breakfast and conduct the Crane quilt raffle.
- i) The Kiwanis brand is incorporated into the project by banners with the Kiwanis International logo posted at the event, by posters with the logo posted at the event and in windows of businesses throughout town, and by the statements “provided by” or “presented by the Kiwanis Club of Monte Vista” in all news releases.
- j) This project is promoted as one of the events in the official Crane Festival brochure, also through news releases in the local papers, an interview on the local radio show “Valley Views”, posts on Web Site & Facebook, posters throughout the City of Monte Vista and through inner clubs with the Division 5 Kiwanis clubs.
- k) The number of third-party news media hits resulted is unknown.
- l) This project attracts potential new members by being visible, showing that Kiwanis is working in the community.
- m) One person observed this project and other projects and contacted Kiwanis about membership and ended up joining.
- n) The annual cost for the project runs between \$700 and \$900.
- o) The annual per member cost runs between \$35 and \$45.
- p) The annual funds raised by the project runs between \$2500 and \$3000.
- q) The annual per member amount of funds raised by the project runs between \$125 and \$150.
- r) Three or four Key Club members assist with the project each year.

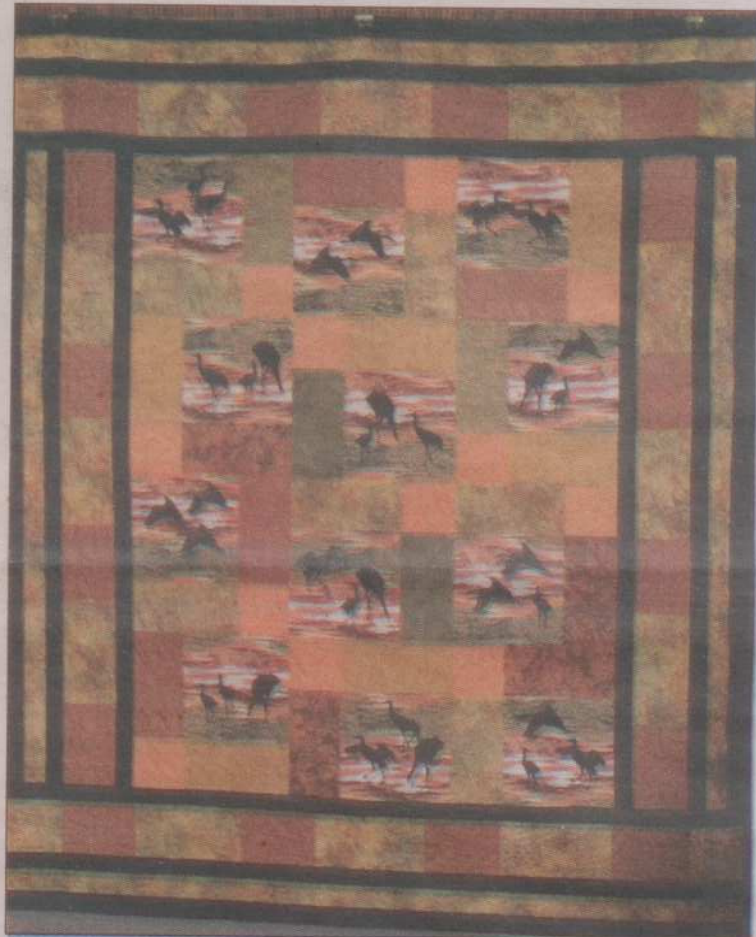
Crane quilt celebrates 20 years

MONTE VISTA— Members of the Kiwanis Club of Monte Vista are sponsoring the 20th Crane Quilt Raffle. Proceeds from the raffle primarily fund the Monte Vista Key Club Scholarship Program with remaining funds used for community service projects.

All of the Crane Quilts have been made from fabric supplied by Shades, Quilts, & Etc., owned and operated by Marilyn Davey. This year's quilt featuring black crane silhouettes was pieced and appliquéd by Leah B. Clark and quilted by Deanna Brown.

There have been 16 SLV winners and three out of Valley winners. Janet Black of Monte Vista was the first winner followed by Janet Czyzewski, Carolyn Kline, Kay Lewis, Pat Davie, Colette Skeff, Brenda Anderson, Stacy Bliss, Dorothy Elliott, Larue Hawkins, Sonya Steinhoff, Helen Duran, SLV REC, Don Carpenter, Scotty Rivera, Pat Davie (two time winner), Staci Turner, Karen Howard, and Teresa Harrison.

Tickets to win this 20th year quilt are on sale at one ticket for \$2 or three tickets for \$5. The drawing will be held during the Crane Festival on March 12 at 2 p.m. at Ski Hi Park in Monte Vista. The winner does not need to be present to win. Tickets are



Courtesy Photo

The 20th crane quilt features black crane silhouettes.

available from Kiwanis members at Savings and Loan-Monte Vista, the following locations: Del Norte Wilbur Ellis Company, Tri County Bank, Dairy Queen, Rio Grande Senior Citizens and Monte Vista

Valley Life

Monte Vista Kiwanis Club hosts pancake breakfast

MONTE VISTA — It's time again to come and enjoy some or all of the activities available at the 2017 Monte Vista Crane Festival, March 10th through March 12th.

If you plan to take the early tour on Saturday, March 11th, and would like to eat before you go, don't scurry about the house trying to find something. Come on down to the birders breakfast at the Ski-Hi Park Complex. The Kiwanis Club of Monte Vista will start serving pancakes at 6

a.m., so you have time to eat before you go. If you prefer to go on the tour first and then eat, they will be serving until 10 a.m. so you have time to take the tour and then eat. Now if you don't plan to take the early tour come any time between 6 a.m. and 10 a.m. and enjoy all-you-can-eat pancakes, sausage, scrambled eggs, and beverages for just \$6 for adults and \$4 for children.

Although the primary purpose of the breakfast is to serve you a delicious breakfast at a reasonable

price, we also raise funds to support ongoing and special community service projects. Some of the ongoing projects the club is involved in are dictionaries for third graders, school supplies to Bill Metz Elementary School, "Wreaths Across America", "After Prom Parties", treats to senior facilities, flags on holidays, floats in parades, coat collection, and support of Boy Scout activities. A couple of the special projects are support of the Faith Hinkley Memorial Park and Kids Connection.



Courtesy photo

Kiwanis members cook up pancakes and other great breakfast items during the annual crane festival in Monte Vista.