

Kiwanis

Nebraska-Iowa District

Vol. 55, No. 6

Kiwanian District Bulletin September-October 2010



**Sylvester Neal, President-Elect
for 2010-2011 is
All Fired Up**

Table of Contents

President Paul Palazzolo Message	2
Ron Petsch 2009-10 Governor Message	3
Gus Dornbusch 2010-11 Governor Message....	3
Key Leader Weekend	5
Worldwide Service Project (ELIMINATE)	6
2010-2011 Leadership Directory	7-16
• 2010-2011 Officers	8
• 2010-2011 Lt. Governors	9
• 2010-2011 District Committees	11

• 2010-2011 Service Leadership Programs	13
• List of Kiwanis Websites	13
• 2010-2011 Foundation Trustees	14
• Past Presidents and Governors	16
Not Going Away, Just Stepping Back	17
Community Service Report for Clubs	18-22
Membership Growth Recognition.....	22
2009-2010 Deceased Members.....	23
2010-2011 Calendar of Events	24

Paul Palazzolo Message

President for 2009-2010

Dear Fellow Kiwanians,

It's hard to believe it is already September, but I would like to encourage you to make one final push this month.

I want you to focus on the Kiwanis family. I want you to focus on planning Service Leadership Programs in your community and inviting participating parents, teachers and administrators to join your Kiwanis Club.

If you already are a sponsor of K-Kids, Builders Club, Key Club, Circle K or Aktion Club, take that next step and reach out to relatives and associates of these clubs and invite them to join Kiwanis. You will not get many new members if you don't ask.

We need to continue growing now more than ever. We are taking on our next World Wide Service Project to eliminate maternal and neo-natal tetanus from the face of the earth. And we need to be as strong as possible for the task ahead of us.

Keep inviting people to join your club. Keep telling your success stories. Keep your club meetings meaningful and fun. And be excited about the change you are making and you can bet that excitement will be contagious.

As always, thanks for making time to make a difference, and keep growing!



Paul Palazzolo
2009-2010 President
Kiwanis International



Service Continues To Be the Backbone of Kiwanis

by Governor Ron Petsch

Throughout this past year, I have been amazed at the many projects and service oriented activities that I have become aware of and have had the opportunity to witness within our District.



With that being said, I know there are still many unmet needs in communities and towns all over where children as well as adults could use the assistance of Kiwanis. In my mind, the need for a local Kiwanis club or a new Kiwanis club to help support those needs is evident.

All of us can appreciate and enjoy the accomplishments that we have made within our own communities in Kiwanis. Let us continue to brainstorm, research and study the needs that exist around us.

The Kiwanis clubs that have completed a community analysis each year know how to focus on the current needs and emerging needs within our cities and towns.

They understand that the needs that our clubs and members have served in the past may or may not be as significant as they once were. With the shifting economy and changes in demographics, needs that Kiwanis should address may shift with time as well.

To make a difference in the life of a child or person, a Kiwanis club needs truly to connect with the community. The club objectives should focus on making that difference, not just existing as a club. Although the term of office for Kiwanis leadership changes on a yearly basis, the needs for service and the mission of Kiwanis continue to remain the same.

I know that all of you will continue your good work and make changes that will enhance your service. This will make your club attractive to those community leaders who wish to participate and make a difference. Helping to build new clubs is an ex-

ension and expansion of our Kiwanis goals.

This past year has been an exciting time and wonderful journey for Jean and me. We thank you for the opportunity to get an up-front look at how Kiwanis clubs and members are making the difference. We also thank you for the time you have so graciously shared with us.

We know your participation in Kiwanis will help motivate and support the next generation of Kiwanis servants. You truly can make a difference in service for those in need; but you can also make a difference in leading the way for others to follow with your enthusiasm and support.

Thanks to all who have contributed in some way this past year and to those who have unselfishly given of themselves for the sake of Kiwanis. Please continue to "Discover the Passion" in your Kiwanis service. Together, we will continue to make a difference. Best wishes always.

A handwritten signature in black ink that reads "Ron Petsch".



Ron Petsch Pin



Gus Dornbusch Pin

Stretch to Serve the Children - with Passion!

by Governor-Elect Gus Dornbusch

I'm passionate about Kiwanis and our guiding statement of "changing one child and one community at a time." We have an opportunity for each of us to set this as our goal each day--- to change one child and one community at a time.



This is why I selected my theme this year to be "Stretch to Serve the Children — with Passion." When we "serve others" and "serve with passion," there is no better feeling that one can experience. The projects your club serves should result in those kinds of feelings.

I want to discuss two of my goals for the 2010-11 fiscal year. The first one is completing a Community Analysis in your community this year and the second is about the TeamMates mentoring program, my Governor's special project.

1. Community Analysis is fundamental to a club's operations. It's a process for clubs to involve community leaders to identify up-to-date needs and develop exciting new projects within the community.

A great example of an exciting project that was identified through a community analysis is the Miracle League ball-field in Des Moines, Iowa.

With a coordinated effort by the Kiwanis clubs in the Des Moines area, the ball-field was built and now serves over 200 children with disabilities. This project provides opportunities to invite potential members to come help serve on this wonderful project and become members.

I was privileged to be there for the start of the fall season and to witness the joy the kids had as they hit the ball and ran the bases. I will always remember the big, determined smiles as they headed from third base to home. The joy expressed by those children is one I'll never forget!

2. Another opportunity which brings joy to kids is my Governor's special project, the TeamMates mentoring program. It's a school-based program where the mentor and mentee meet for one hour each week during the school year. The TeamMates program is a perfect fit with our defining Kiwanis statement - changing one child and one community at a time.

If your community has a TeamMates program, Kiwanis members should become mentors and your club could provide financial assistance for scholarships and/or funds to support mentors.

If your community does not have a TeamMates mentoring program, the TeamMates office will

assist the school to establish a "chapter" and the club should be the catalyst to bring this about, plus provide mentors and financial support.

I have been mentoring in this program for the past 13 years and it's been a life-changing experience for me to see the difference that occurs in a child. I invite you to be a mentor.

All of the District goals outlined in this Kiwanian, including the two discussed above, are needs and services that Kiwanis clubs provide daily.

The needs in our communities have increased dramatically in the past few years, and it shouts to us that we need to increase our membership. And yet, each monthly report shows we are losing more members than we are taking in. We must reverse this trend. **We can do it!**

Each one of us needs to "ask" potential members to come visit our club or assist with a service project to help meet the needs of the children in our community. Together we can make this happen.

I'm so excited about what is going to happen in each club as our members "stretch" to make a difference. Our Kiwanis International President Sylvester Neal wants each one of us to "light a fire" and do more than we've ever done for the children in our communities.



He will be visiting our District in June 2011 and we should have the **fire burning so out of control** that he will say, "Well done - add more fuel!"

Thank you for all you are doing and an even bigger thank you for all you will be doing as we all "stretch to serve the children - with passion."

Gus Dornbusch

Key Leader Weekends

Nebraska Weekend: Nov 5-7 at Eastern 4-H Center in Gretna, NE

Iowa Weekend: Nov 12-14 at Wildwood Hills in St. Charles, IA.

Key Leader contact: Paul Lytle (402-477-6248, pd133@aol.com).

Key Leader website: <http://slp.kiwanis.org/KeyLeader/Home.aspx>.

Key Leader Weekend

Key Leader is a leadership education program which gives high school students an opportunity to experience personal development, growth, and fellowship.



During their three days at a Key Leader weekend, students from 14 to 18 years of age explore new ideas, accomplish exciting challenges, and build enduring friendships in a safe, supportive environment. Its mission is to provide a "life-changing experience that inspires young people to achieve their personal best through service leadership."

Frequently Asked Questions

- 1. Who can attend a Key Leader weekend?**
Weekends are open to all students ages 14 to 18, including those currently in a Kiwanis student group such as Key Club, or students who have not yet been a part of a Kiwanis family program. In addition, there is no limit on the number of participants coming from the same school.
- 2. What is the time schedule for the weekend?**
Students will arrive for registration from 4-6 p.m. on a Friday afternoon and depart after 11:30 a.m. on Sunday morning. All lodging, meals and activities will be at the weekend site during that time. Check out the Key Leader [sample weekend agenda](#).
- 3. What are the activities at a Key Leader weekend?**
The students will have large and small group activities, with a combination of information, discussion, interactive weekends and audio-visual presentations. In every weekend there will be a lot of fun with new friends. Take a look at the [sample weekend agenda](#).

4. What adults are present during the weekend?

A professional facilitator who brings excellent experience working with young people to the program, and who has successfully completed a training course on the curriculum will lead the weekend.

Each Kiwanis district will also have trained adult volunteers present to coordinate the logistics and supervision of the young people. Kiwanis International will have completed a limited criminal history background check on all the adults who are present for the weekend.

5. What is the cost for the weekend?

The all-inclusive cost will be US\$200 for each student. A school, Kiwanis club, community organization, church group, family or others can sponsor a student and pay that cost.

6. Are there any special discounts currently available?

Through a generous grant from the Kiwanis International Foundation, the first 1,000 members of Key Club who register for a 2010 weekend will receive a \$25 discount.

7. Are there student facilitator positions in Key Leader?

Yes. Students in the 11th and 12th grades who have previously attended a Key Leader weekend or who are in a Key Club leadership role may apply to be student facilitators. Fill out the application available on the Key Leader website and [register now](#). The fee for student facilitators is only US\$115.



(Continued on page 6)

8. **How do students register for a weekend?**
Select the [register now](#) page to begin. Be ready to complete a form with basic information, including an e-mail address. The students will also need to list their nominator, an adult who recommends them for the program, and the sponsor, the adult or organization who is paying their fee.

After completing this form, the registration can be paid right away with credit card or an invoice will be sent to the student, the nominator and the sponsor.

That invoice needs to be completed with payment either by check or credit card before the student will be accepted into the program. Please note that participants who register within 14 days of a weekend will be charged a \$25 late fee.

9. **How do you find out more information on Key Leader?**
Visit the Key Leader website at <http://slp.kiwanis.org/KeyLeader/Home.aspx>. Also, see the [schedule of weekends](#) which includes dates, locations, weekend contacts and the lead facilitators for each weekend. E-mail any questions to the weekend contact associated with the weekend that interests you.

Registrations are limited, so we encourage clubs to register students now for the NE-IA Key Leader weekends in November.

ELIMINATE Project by Frank Murphy

The next World-wide Service Project was announced at the opening session of the Kiwanis International Convention in June.



This project is called ELIMINATE and was chosen from over 200 proposals received in 2009. These proposals were narrowed to three in the fall of 2009 and then to one by the Kiwanis International Board in April. The project is to eliminate Maternal and Neonatal Tetanus (MNT).

Maternal and neo-natal tetanus kills one baby every nine minutes. MNT can abruptly turn the joy of new life into wrenching tragedy. Its effects are excruciating — tiny newborns suffer repeated, painful convulsions and become hypersensitive to light, sound and touch. Even a mother's soothing voice and comforting caress are unbearable for the infant. Few babies survive. Tetanus may claim the mother's life as well.



In impoverished countries, where women have little access to health care, many are forced to give birth in an unsanitary environment.

Tetanus spores are found everywhere — in the air, soil and contaminated objects. Bacteria can enter the mother's body through open wounds and pass through a newly cut umbilical cord. Once the baby is infected, a lethal toxin attacks his or her nervous system. However, tetanus is highly preventable. Three doses of a vaccine can protect mothers and babies.

With the Eliminate Project, Kiwanis International and UNICEF have joined forces to eliminate maternal and neonatal tetanus. This deadly disease steals the lives of 60,000 innocent babies and 30,000 mothers each year.

What is MNT?

In 40 countries around the world, maternal and neonatal tetanus can quickly turn the joy of childbirth into tragedy. There is little hope of survival. And tetanus kills mothers too.

Who suffers from MNT?

MNT is caused when tetanus spores, found in soil everywhere, come into contact with open cuts during childbirth. The disease strikes the poorest of the poor, the geographically hard to-reach and those without health care.

Can MNT be stopped?

Yes! MNT is highly preventable. Just three doses of a 60-cent immunization protects mothers, who then pass on the immunity to their future babies.

(Continued on page 17)

2010-11 Leadership Directory

Stretched to Serve



Stretch By Each Club To Conduct

- A Community Analysis
- A Club Assessment

Stretch By Each Club To Serve

- Children and Community Needs
- By Initiating One New Service Project
- By Supporting Service Leadership Programs
- By Participating in TeamMates Mentoring Program

Stretch By Each Club to Grow Membership

- One new Club in Each Division
- Increase Club Membership by 5% Net
- Retain Current Club Members
- Sponsor as Least One Service Leadership Program

Stretch by Each Club to Achieve

- Distinguished Club Status

One

can make a difference

A child's potential is limitless but it needs to be nurtured. Since 1915, Kiwanis International has provided the framework to bring volunteers and children together, with thousands of hours given each year working one-on-one with children all over the world. Teaching them to read. Involving them in service projects. Showing them how to build stronger communities. Grassroots involvement on every continent. Because every child has the potential to shine.



**Governor
Gus Dornbusch**

6521 Everett St
Lincoln, NE 68506
Res: 402-483-6312
ad24734@windstream.net
Spouse: Donna
Club: Lincoln Sunrise



**Governor-Elect
Marvel Dunaway**

14111 Wilden Dr
Urbandale, IA 50323
Res: 515-278-1550
Cell: 515-979-6528
marveldunaway@gmail.com
Spouse: Bob
Club: Merle Hay Urbandale



**Treasurer
Bob Mitchell**

1621 Greenbranch Cir
W Des Moines, IA 50265
Res: 515-457-7691
Cell: 515-991-1483
bmitchellhr@aol.com
Spouse: Jan Burch
Club: Des Moines Downtown
and Ankeny



**Immediate Past Governor
Ron Petsch**

420 Cottonwood Ave
Milford, NE 68405
Res: 402-761-2071
Cell: 402-641-3046
rrpetsch@windstream.net
Spouse: Jean
Club: Milford/Seward Helping Hands



**District Secretary
Frank Murphy**

501 Raider Dr
Williamsburg, IA 52361
Bus: 319-331-9926
Fax: 888-251-4191
secretary@nikiwanis.org
Spouse: Janet
Club: Williamsburg



**Kiwanis International Trustee
Dr. John R. Buttons**

68 Main Street, P.O. Box 160
Ridgetown, Ontario,
Canada NOP 2C0
Bus: 519-674-0000
Res: 519-674-2874
buttons@xplornet.com
Spouse: Debbie
Club: Ridgetown

**Division 1****Mark Holmer**

2525 E State St
Algona IA 50511
Res: 515-295-9537
revmark@netamumail.com
Spouse: Linnea
Club: Algona Morwens

**Division 2****Kirk Hayes**

406 Brookridge, PO Box 462
Algona, IA 50511
Res: 515-295-3732
Cell: 515-341-4567
Kirk.hayes@phmic.com
Spouse: Julie
Club: Algona Noon

**Division 3****Paul Brenner**

1305 Grand Avenue
Spencer, IA 51301
Res: 712-262-4113
Cell: 712-262-4113
pbantigs@smunet.net
Club: Spencer Daybreakers

**Division 4****Lyle Hollander**

3852 270th St.
Boyden, IA 51223
Res: 712-475-2634
lhollander@frontiernet.net
Spouse: Lorna
Club: George

**Division 5****Mary Ruble**

119 Pioneer Valley Dr.
Sergeant Bluff, IA 51054
Res: 712-253-3430
rubem@longlines.com
Spouse: Jim
Club: Sergeant Bluff

**Division 6****Curt Reis**

1207 Poplar Ln
Storm Lake, IA 50588
Res: 712-732-6104
creis@iw.net
Spouse: Connie
Club: Storm Lake

**Division 7****Ron Keigan**

2030 Ohio St
Webster City, IA 50595
Res: 515-832-6250
rkeig58@mchsi.com
Club: Webster City Diamond K

**Division 8****Charles Wheeland**

2772 Crestline Ave
Waterloo, IA 50702
Res: 319-232-8523
wheelandch@gmail.com
Spouse: Jean
Club: Waterloo

**Division 9****Kevin Ballard**

1545 A Ave
Marion, IA 52302
Res: 319-573-8267
kballard@hoganhansen.com
Club: Marion Metro

**Division 10****Rolland Nauman**

1001 W State St
Marshalltown, IA 50158
Res: 641-752-7216
Cell: 641-751-4169
nauman@marshallnet.com
Spouse: Yvonne
Club: Marshalltown Matins

**Division 11****Gary Wade**

2600 Cottonwood Rd
Ames, IA 50014
Res: 515-292-4073
Cell: 515-451-5312
gary.wade@drake.edu
Spouse: Sharon
Club: Ames

**Division 12****Dennis Bell**

1016 Ridge Rd
Denison, IA 51442
Res: 712-263-2384
ia04399@frontiernet.net
Spouse: Mary
Club: Denison

**Division 13****Steve Bolie**

10670 Ridgeview Dr
Clive, IA 50325
Res: 515-222-3147
Cell: 515-577-3147
stevebolie@aol.com
Club: Creston

**Division 14****Jim Dane**

4507 Dane Rd SW
Iowa City, IA 52240
Res: 319-354-3963
Cell: 319-530-3263
jim@dane.org
Spouse: Ruth
Club: Iowa City Old Capitol

**Division 15****Don Garrett**

215 South 12th
Chariton, IA 50049
Res: 641-203-0336
dgarrett@iowatelecom.net
Spouse: Janie
Club: Chariton

**Division 16****Mike Musich**

32277 162nd Lane
Woodward, IA 50276
Res: 515-999-2787
Cell: 515-778-3217
mike@privateassetadvisory.com
Spouse: Sue
Club: Merle Hay/Urbandale

**Division 17****Jan Anunson**

7423 N 107th Ave
Omaha, NE 68122
Res: 402-496-4598
Cell: 402-669-0731
dj1969anunson@live.com
Spouse: Rev Duane
Club: Council Bluffs

**Division 18****Jason Barelman**

58509 854 Road
Wakefield, NE 68784
Res: 402-287-9012
jabarel1@wsc.edu
Spouse: Mark Moser
Club: Wayne

**Division 19****Lisa Brichacek**

1676 No. Laurel
Wahoo, NE 68076
Res: 402-660-6962
Lisa.bridhacek@
wahoone newspaper.com
Club: Wahoo

**Division 20****Linda Placzek**

207 Valley Road
Papillion, NE 68046
Res: 402-592-5104
laplaczek@cox.net
Club: Omaha Golden K

**Division 21****Skip Thomas**

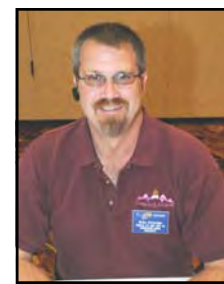
2516 North 78th St
Lincoln, NE 68507
Res: 402-466-3507
bjthomas@inebraska.com
Spouse: Jo
Club: Lincoln Sunrise

**Division 22****Paul Lytle**

5429 Blueberry Ct.
Lincoln, NE 68516
Res: 402-477-6248
Cell: 402-580-4810
pd133@aol.com
Spouse: Kathy
Club: Lincoln Southeast

**Division 23****Pat Checketts**

715 N York, Apt 3
York, NE 68467
Res: 402-369-1587
patchecketts@hotmail.com
Club: York

**Division 24****Michael Sovereign**

617 1/2 West B Street
North Platte, NE 68101
Res: 308-520-5584
Cell: 970-356-9439
mlsovereign@aol.com
Spouse: Lisa
Club: N Platte Buffalo Bill

Achievement**Bill Morrison**

502 E Pearl St
Elkhorn, NE 68022
Res: 402-763-9612
rzrbkbill@yahoo.com

Community Services

(Open)

District Convention, 2011**Ken Mason, Co-Chair**

7920 Hazelwood Dr.
Lincoln, NE 68510
Res: 402-317-8836
kandamas@yahoo.com

Sandy Scheinost, Co-Chair

5345 S 79th St
Lincoln, NE 68516
Res: 402-489-7710
sschein@windstream.net

**Leadership Development
and Education****Irv Omtvedt, Co-Chair**

7400 Laura Lynn Ct
Lincoln, NE 68516
Res: 402-489-6146
Bus: 402-472-0272
iomtvedt@unl.edu

William Saxton, Co-Chair

2345 45th Street
Lincoln, NE 68510
Res: 421-3566
wsaxton@neb.rr.com

Finance and Fund Raising**Larry Ziska**

6202 Belvedere Blvd
Omaha,, NE 68111
Res: 402-451-3189
Cell: 402-968-5090
zziska@aol.com

Interclub**Betty Borchardt**

PO Box 303
Riceville, IA 50466
Res: 641-985-2104
Cell: 641-220-4343
betborch@omnitelcom.com

**Human and Spiritual Values
plus Lay Person of the Year
Award****DeAnna Jurgens**

1730 S 77th
Lincoln, NE 68506
Res: 402-488-3639
dejurgens@netzero.com

KI Convention, 2011**Tracey Scissors-Domgard**

6125 Rosebud Drive
Lincoln, NE 68516
Res: 402-421-6157
tsdomgard@windstream.net

KI Convention Candidates**Mark Holmer**

2512 East State Street
Algona, IA 50511
Res: 515-295-9537
Bus: 515-341-1514
revmark@netamumail.com

Laws and Regulations**Larry Ziska**

6202 Belvedere Blvd
Omaha,, NE 68111
Res: 402-451-3189
Cell: 402-968-5090
zziska@aol.com

Long-Range Planning**Milford Hanna**

5835 S 91st St
Lincoln, NE 68526
Res: 402-540-3940
Bus: 402-472-1634
mhanna1@unl.edu

Midyear Conference, 2011**Jan Burch, Co-Chair**

1621 Greenbranch Cir
W Des Moines, IA 50265
Res: 515-457-7691
burchhr@aol.com

Kerry Walter-Ashby, Co-Chair

1014 SW Springfield Dr
Ankeny, IA 50023
Res: 515-289-0544
rioashby@aim.com

Newsletter Editor**Frank Murphy**

501 Raider Dr
Williamsburg, IA 52361
Bus: 319-331-9926
Fax: 888-251-4191
secretary@nikiwanis.org

Past District Governors**Don Glenn**

11765 Amos Gates Dr
Bellevue, NE 68123-1177
Res: 402-291-9177
Cell: 402-651-2400
donglenn@cox.net

Past Lt. Governors Assoc.**Mark Holmer**

2512 East State Street
Algona, IA 50511
Res: 515-295-9537
Bus: 515-341-1514
revmark@netamumail.com

Risk Management**Howard Omdahl**

PO Box 555
Algona, IA 50511
Res: 515-295-7518
Bus: 515-295-7707
homdahl@sundetomdahl.com

Presidential Visit 2011

(Open)

Webmaster**Ron Petsch**

420 Cottonwood Ave
 Milford, NE 68405
 Cell: 402-641-3046
 Bus: 402-761-8213
 rpetsch@windstream.net

Young Children: Priority One**Jeanne Virtue**

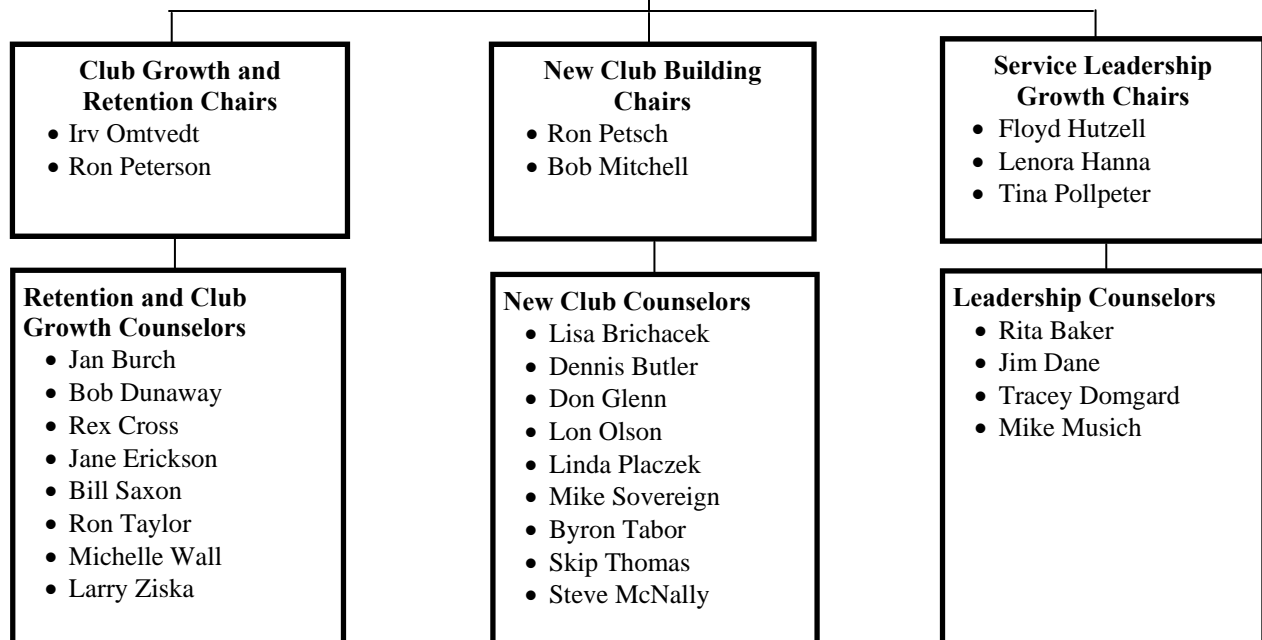
1004 15th St
 Onawa, IA 51040
 Res: 712-433-1259
 jmvirtue@longlines.com

Youth Services**Joe Melcher**

1138 S J Ave
 Nevada, IA 50201
 Res: 515-382-5811
 peptuck@midiowa.net

NE-IA Kiwanis District Growth Team

Growth Team Lead: Milford Hanna
Governor: Ron Petsch
Governor-Elect: Gus Dornbusch
Treasurer: Marvel Dunaway
District Secretary: Frank Murphy
Growth Retention Chairs (2)
New Club Building Chairs (3)
Existing Club Growth Chairs (3)
Service Leadership Chairs (3)



Aktion Club
Floyd Hutzell
Administrator, Aktion Club
 60 Oak Ridge Dr
 Algona, IA 50511
 Res: 515-295-2188
 fjhutz@netamumail.com

Circle K District Governor
 Nick Schreck
 Midland University
 PO Box 338
 Arlington, NE 68002
 NE-IA Circle K Governor
 (402) 720-1089
schrecknk@mlc.edu

Lenora Hanna
Administrator, Circle K
 5835 S. 91st St
 Lincoln, NE 68526
 Cell: 402-416-0432
 lenora_hanna@yahoo.com

Evie Sue Ward
Key Club District Governor
 2506 Sheridan Rd
 Bellevue, NE 68123
 Cell: 402-990-3068
 evelyn.ware72@gmail.com

Tina Pollpeter,
Administrator, Key Club
 277 S 79th St #607
 W Des Moines, IA 50266
 Cell: 515-975-9211
 tinapotthoff@yahoo.com

Jenny Gruber
Assistant, Key Club
 7532 N 107th Ave
 Omaha, NE 68122
 Res: 402-933-9327
 jlgruber@cox.net

Builders Club
Hal Tuttle, Administrator
 1129 11th St
 Sheldon, IA 51201
 Res: 712-324-4190
 hptuttle@nethtc.net

K-Kids
Glenn Bauer
Administrator
 15811 Leavenworth St
 Omaha, NE 68118
 Res: 402-334-8304
 gmbauer@cox.net

Key Leader Program
Paul Lytle
 5429 Blueberry Court
 Lincoln, NE 68516
 402-477-6248
 pdl33@aol.com

Kent Pollpeter,
Iowa Site Coordinators
 277 South 79th St., Unit 607
 Des Moines, IA 50266
 515-229-3181
 kent.pollpeter@hotmail.com

Teresa Dredge,
Nebraska Site Coordinator
 1580 North 1st Street
 Seward, NE 68434
 402-643-9374
 cdredge@yahoo.com

Kiwanis Web Sites

Nebraska-Iowa Kiwanis District
www.ne-ia.kiwanisone.org

Nebraska-Iowa Key Club
www.ne-ia.kiwanisone.org/key_club

Nebraska-Iowa Circle K
www.nicirclek.org

Builders Club
www.buildersclub.org

Aktion Club
www.aktionclub.org

K-Kids
www.kkids.org

Kiwanis International
www.kiwanis.org

KiwanisOne
www.kiwanisone.org

Nebraska-Iowa District Foundation
www.ne-ia.kiwanisone.org

Kiwanis International Foundation
<http://kif.kiwanis.org/>

Key Leader Program
<http://slp.kiwanis.org/KeyLeader>
 -or-
www.ne-ia.kiwanisone.org/key-leader

Nebraska-Iowa District Foundation Officers**Warren Spencer, President**

14441 Oak Lane
Waverly, NE 68462-1546
Res: 402-786-3074
Cell: 402-525-7286
wspencer2@windstream.net

**Jack Schinstock,
Vice-president**

1048 Aldrich Rd
Lincoln, NE 68510
Res: 402-483-4603
Cell: 402-310-7727
jschinstock@windstream.net

Board Advisor**Larry Ziska, Jr.**

6202 Belvedere Blvd
Omaha, NE 68111
Res: 402-451-3189
zziska@aol.com

Geof Northridge, Secretary

805 S Main St
Fairfield, IA 52556
Res: 641-919-4244
gnorthridge@msn.com

Don Glenn, Treasurer

11765 Amos Gates Dr
Bellevue, NE 68123-1177
Res: 402-291-9177
Cell: 402-651-2400
donglenn@cox.net

Board Advisor

(Open)

**Mary Langdon,
Immediate Past President**

2862 Druid Hill Dr.
Des Moines, IA 50315
Res: 515-277-5476
Cell: 515-988-3640
Fax: 515-277-3690
marymlangdon@gmail.com

District Foundation Board of Trustees**Division 1****Betty Borchardt (2011)**

P0 Box 303
Riceville, IA 50466-0303
Res: 641-985-2104
betborch@omnitelcom.com

Division 2**Lori Jorgenson (2012)**

306 Ash Street
Fenton, IA 50539
Res: 515-889-2320
lorijorgenson
@murphybrownllc.com

Division 3**Paul Brenner (2010)**

1305 Grand
Spencer, IA 51301
Cell: 712-262-4113
pbantigs@smunet.net

Division 4**Merlyn Rehder (2012)**

1020 Avenue N
Hawarden, IA 51203
Res: 712-552-2626

Division 5 (2010)**Terry Virtue**

1315 Marble St
Onawa, IA 51040-1539
Res: 712-433-1259
jmvirtue@longlines.com

Division 6 (2012)**Vicky Roberts**

527 Early Street
Storm Lake, IA 50588
Res: 712-732-6729
toots@iw.net

Divisions 7**Jane Clingerman (2010)**

27835 0 Avenue
New Providence, IA 50206
Res: 641-497-5340
Cell: 641-751-3251
clinger@heartofiowa.net

Divisions 8**Jane Clingerman (2010)**

27835 0 Avenue
New Providence, IA 50206
Res: 641-497-5340
Cell: 641-751-3251
clinger@heartofiowa.net

Division 9**John Anderson (2012)**

1835 2nd Avenue, S.E.
Cedar Rapids, IA 52403
Res: 319-310-7089

Division 10**Linda Dodd Smith (2012)**

PO Box 1591
Marshalltown, IA 50158
Res: 641-485-7967
Bus: 641-753-9983
lds@marshalltownkiwanis.org

Division 11**Jody Melcher (2008)**

1138 South J Avenue
Nevada, IA 50201-2730
Res: 515-382-5811
peptuck@midiaowa.net

Division 12**Jackie Olson (2008)**

1445 Quay Ave
Woodbine, IA 51579-4023
Res: 712-647-2015
jsolson@iowatelecom.net

District Foundation Board of Trustees (continued)

Divisions 13
Ron Taylor (2012)
 422 W Green St
 Winterset, IA 50273
 Res: 515-462-1810
 ronroset@msn.com

Division 14
Evan Mathews (2011)
 3401 E Court St
 Iowa City, IA 52245
 Res: 319-351-1704
 Cell: 319-330-2129
 evancmatt@aol.com

Division 15
[Open]

Divisions 16
Ron Taylor (2012)
 422 W Green St
 Winterset, IA 50273
 Res: 515-462-1810
 ronroset@msn.com

Division 17
Rev Duane Anunson (2012)
 7423 N 107th Ave
 Omaha, NE 68122
 Res: 402-496-4598
 dj1969anunson@live.com

Division 18
George Phelps (2010)
 1200 Crescent Rd
 Wayne, NE 68787
 Res: 402-369-1818
 phelps@huntel.net

Division 19
Larry Ziska (2012)
 6202 Belvedere Blvd
 Omaha, NE 68111
 Res: 402-451-3189
 Cell: 402-968-5090
 zziska@aol.com

Division 20
Steve Maji (2012)
 6045 Oak Hills Dr.
 Omaha, NE 68137
 Res: 402-330-4996
 maji@tconl.com

Division 21
Ty Westover (2012)
 6212 So. 32nd Street
 Lincoln, NE 68516
 Res: 402-421-1785
 Cell: 402-730-9484
 ty.westover@bhi-1.com

Division 22
Gary Herr (2012)
 7430 Cardwell Cir
 Lincoln, NE 68523
 Res: 402-328-8873
 gpaherr@aol.com

Division 23
Don Siffring (2011)
 1507 Hillcrest Dr
 Juniata, NE 68955
 Res: 402-462-8918
 Cell: 402-469-2263
 ds01207@windstream.net

Division 24
[Open]

Jane Erickson,
Past President
 203 Caldor Dr
 Bellevue, NE 68005
 Res: 402-293-1282
 Bus: 402-293-1282
 Fax: 402-682-9686
 bewelljane@cox.net

Curt Reis, District Chair
 1207 Poplar Lane
 Storm Lake, IA 50588
 Res: 712-732-6104
 Bus: 712-213-1099
 Fax: 712-213-0359
 creis@iw.net



**International President
(2010-2011)**
Sylvester Neal
3636 Woodview Trace
Indianapolis, IN 46268
1-800-549-2647
sylvestorneal0139@msn.com



**Past International President
(2005-2006)**
Steve Siemens
6478 NE 5th Ave
Des Moines, IA 50327
Res: 515-265-7169
Bus: 515-265-8748
steve@thepeoplebuilder.com



**Past International President
(1971-1972)**
Wes Bartlett
423 S Jones St
Algona, IA 50511
Res: 515-295-7163

Nebraska-Iowa Kiwanis District Living Past Governors

1953 Wes Bartlett Algona	1981-1982 Gerald Bloom Logan	1992-1993 Milford Hanna Lincoln Northeast	2000-2001 Sheldon Howerter Harlan	2007-2008 Mark Holmer Algona
1955 W.G. "Bill" Miller Polk City	1984-1985 Robert Tollefson Storm Lake	1993-1994 Glenn "TJ" Tjaden Webster City	2001-2002 Jane Erickson Bellevue-Offutt	2008-2009 Don Glenn Bellevue
1956 Kermit Doolittle Webster City	1987-1988 Roger Lawrence Ames	1994-1995 Anthony Caponigro Ankeny	2002-2003 Kim Wermersen Spirit Lake	2009-2010 Ron Petsch Milford, NE
1976-1977 Art Gratiis Nora Springs	1988-1989 James LaRue Cedar Falls	1995-1996 N.N. "Gus" Erickson Bellevue-Offutt	2003-2004 Phillip Rooney Lincoln Capital City	
1977-1978 Larry Vaughan Lincoln Capital City	1989-1990 Lawrence Ziska, Jr. North Omaha	1996-1997 Stephen Siemens Des Moines	2004-2005 Robert Dunaway Monroe	
1978-1979 Richard Hogan Council Bluffs	1990-1991 Robert Hastings Council Bluffs	1998-1999 Clint McDonald Hastings/Lincoln	2005-2006 Raymond Ward Kearney	
1980-1981 Marvin Anderson South Sioux City	1991-1992 Robert Nedrow Sac City	1999-2000 Clark Marshall Spencer Daybreakers	2006-2007 Dave Hessman Spencer	

(Continued from page 6)

Together, Kiwanis and UNICEF can stop this disease.

Why hasn't MNT been eliminated already?

UNICEF has helped to successfully eliminate MNT in many countries. But in 40 countries in Africa, Asia, Europe and North America, it still strikes babies and mothers who have little or no access to health care — either because they are poor, live in remote areas or are caught in humanitarian emergencies. More funds and resources are needed to reach all babies and mothers at risk.

What will it take to eliminate MNT from the Earth by 2015?

Over 129 million mothers and their future babies must be immunized. This requires vaccines, syringes, safe storage, transportation, thousands of skilled staff and more. It will take \$110 million — and the dedicated work of UNICEF and every member of the Kiwanis family.

Why focus on this issue?

It is unacceptable that innocent newborns and their mothers suffer and die from MNT when it can be prevented so easily. This is also an amazing opportunity to reach the poorest, most neglected mothers and babies with lifesaving health care.

What is the Eliminate partnership?

Hand in hand, Kiwanis and UNICEF will eliminate MNT and change the world. Kiwanis' commitment, vision and strength in reaching communities and leaders will help wipe out this cruel, centuries-old disease and pave the way for other interventions. UNICEF has staff working in the most isolated corners of the globe and an unbeatable supply chain.

When will we start the ELIMINATE Project?

Kiwanis and UNICEF will use the rest of 2010 and early 2011 to plan and complete preparation for this project. The kick-off for the project will be at the Kiwanis International Convention in Geneva, Switzerland July 2011.



Not Going Away, Just Stepping Back

Larry Ziska, Governor 1989-90

It began as a gem of an idea at a meeting in Ames, Iowa, more than 30 years ago.



As a Nebraska-Iowa District Foundation Board member representing his division, Larry Ziska remembers the discussion about sponsoring a one-week camp for talented and gifted kids who couldn't afford to attend a camp.

By 1982-83, Camp OK (Camp Olympia Kiwanis) was off the ground. And for all but a couple of those 28 years, Larry has been, as Division 19 District Foundation Trustee Joann Feller likes to say, "the go-to man."

With a record 104 campers in attendance in 2010, Ziska has decided to take a lesser role. This was his last year working with clubs and coordinating the recruitment of students.

"I'm not going away,," Ziska said. "I am just going to do something different with respect to Camp OK. It has truly been a privilege to work with the camp over these many years."

Those years have seen a lot of growth and change at the camp. Every year, evaluations point to where improvements can be made. In the early years, Foundation board members and officers served as student counselors, which often created a wide generation gap between counselor and camper.

This year, 25 Key Club and Circle K counselors volunteered their time to spend a week at Camp OK. Several years ago, the Foundation approved a grant for a high school instructor (a Kiwanian) to receive equipment and software for two Flight Simulators. Three years ago, the simulators were incorporated into the camp curriculum as an introduction to flying, involving math calculations and other higher-level skills.

(Continued on page 23)

NE-IA District Club Membership and Project Service Report

Our district has 194 clubs. As of October 1, 2009, we had a total membership of 7,068. As of September 6, 2010, our membership has decreased by 192 members to 6,876. We want to thank those clubs that have maintained or increased their membership. We also want to thank those clubs that are reporting their service projects and the hours of service. YTD, the NE-IA Kiwanis District has complete 3,866 service projects totaling 98,692 hours of service. We encourage clubs that haven't been reporting to do so.

	Oct 1 Members	May 31 Members	Service Projects	Total Service Hours
Division 1				
Charles City	26	27	107	106
Charles City Sunrisers	20	20	2	33
Cresco	27	27	3	114
Mason City	28	27	1	9
Mason City River City	30	31	1	1167
Nora Springs	13	12	1	208
Osage	33	29		
Riceville	21	23	1	10
Totals	195	196		
Division 2				
Algona	71	67	31	373
Algona After Five	28	20		12
Algona Golden K	29	26	30	630
Algona Morwens	46	43	2	74
Fort Dodge	32	33	3	71
Fort Dodge Golden K	58	60	17	468
Humboldt (Noon)	29	25	23	60
Humboldt Seven O'Clockers	27	26	1	20
Totals	320	300		
Division 3				
Emmetsburg	25	26		
Estherville	40	43		57
Lake Park	18	15		
Milford (Iowa)	54	63	22	422
Spencer After Five	40	39	1	24
Spencer Daybreakers	57	54		2

	Oct 1 Members	May 31 Members	Service Projects	Total Service Hours
Division 3 (Continued)				
Spencer Golden K	42	38	3	1035
Spencer Hy-Noon	72	64		
Spirit Lake	87	92	4	177
Spirit Lake Sunrise	21	21	5	167
Spirit Lake, Lakes Golden K	24	27		
Terril	13	14	6	41
Totals	493	496		
Division 4				
Boyden	14	11	3	112
George	23	23	109	3267
Hawarden	7	6	10	28
Hull	27	27	6	1151
Inwood	23	20		
Rock Rapids	48	49	10	274
Rock Valley	12	13	1	4
Sheldon	30	33		
Sheldon Prairie Queen	48	48	52	2637
Sibley	29	28		
Sioux Center	45	37		
Totals	306	295		

Explanatory Indicators

Red Numbers - membership reduction for club
 Blank Cell - No reporting YTD for Service Projects and/or Service Hours
 CSD - Charter Suspended Declaration
 PR — Charter Pending Revocation

	Oct 1 Members	May 31 Members	Service Projects	Total Service Hours
Division 5				
Holstein	26	24	33	1265
Ida Grove	25	21	1	1775
Le Mars	42	40	1	98
Northwest Iowa MOCHA	16	16		
Onawa	34	38	10	222
Sergeant Bluff	37	33	8	225
Sioux City	33	32		
Sioux City Morningside	25	31	25	362
South Sioux City, NE	27	24	17	326
Totals	265	259		
Division 6				
Alta	28	31	11	29
Aurelia	35	34	2	82
Cherokee	19	16		
Laurens	31	29	2	12
Sac City	29	30	10	328
Storm Lake	50	52		
Storm Lake Beavers	25	25	1	186
Totals	217	217		
Division 7				
Eldora	35	35		
Hampton	69	68	1	
Iowa Falls Scenic City	29	30	6	241
Radcliffe	16	16	7	351
South Hardin County	20	16	11	682
Webster City	28	30		
Webster City Diamond K	16	16		352
Webster City Main Street USA	31	29	32	289
Totals	244	240		

	Oct 1 Members	May 31 Members	Service Projects	Total Service Hours
Division 8				
Cedar Falls	23	22	1	3
Cedar Falls Rough Risers	36	34	16	318
Greater Waverly	34	35		
Grundy Center	42	45	3	28
Waterloo	59	55	1	5
Waterloo Easy Risers	22	15		
Totals	216	206		
Division 9				
Cedar Rapids	41	45	17	146
Cedar Rapids Golden K	21	0		CSD
Hiawatha CREW	34	28	14	142
Marengo	21	20		
Marion Metro	20	20	2	60
Marion Sunrisers	12	12		453
Vinton	51	52	5	42
Williamsburg	38	37	1	58
Totals	238	214		
Division 10				
Brooklyn	30	36	8	84
Grinnell	30	30		
Marshalltown	24	24	19	175
Marshalltown Matins	50	47	4	133
Marshalltown P.M.	16	17	12	280
Newton Golden K	25	25		14
Newton Noon	42	40		
Toledo-Tama	32	31	3	52
Totals	249	250		



**Together we can
make the world a
better place**

	Oct 1 Members	May 31 Members	Service Projects	Total Service Hours
Division 11				
Ames	101	87	16	917
Ames Golden K	105	100	1	1480
Ames Town and Country	45	41	2	16
Boone	37	39	1	165
Boone Day-Breakers	39	38	2	24
Jefferson	47	48	6	46
Nevada	65	63	15	270
Nevada Golden K	47	43	6	64
Roland	20	23	3	485
Story City	27	27	9	440
Totals	533	509		
Division 12				
Carroll	23	23	2	30
Denison	37	39	5	119
Harlan	20	17		
Harlan Golden K	16	13	26	164
Logan	29	35	14	340
Missouri Valley	14	18		4
Woodbine	28	25	1	1394
Totals	167	170		
Division 13				
Adel	27	22		4
Creston	45	41		35
Des Moines Westside	25	25	47	288
Northwest Des Moines	18	25	12	234
Perry	26	29	4	58
Polk City	42	36	6	143
West Des Moines	42	45	30	1138
Winterset	32	33	12	303
Totals	257	256		

	Oct 1 Members	May 31 Members	Service Projects	Total Service Hours
Division 14				
Coralville Corridor	22	15		
Fairfield	37	41	2	16
Iowa City	29	25		
Iowa City Old Capitol	78	78	26	568
Sigourney	22	26		
Washington	37	32	6	112
Washington A.M.ers	35	33	1	250
Totals	260	250		
Division 15				
Chariton	29	31	4	126
Knoxville	35	35	13	1638
Knoxville Noon	20	18	44	551
Monroe	54	52	18	678
Oskaloosa	25	21		
Oskaloosa Sunrise	14	12	4	33
Ottumwa	29	27		
Ottumwa Hy-Noon	37	36		117
Pella	43	42		
Totals	286	274		
Division 16				
Altoona	29	33	33	314
Ankeny	17	13	5	233
Des Moines (Downtown)	72	72	54	3570
Des Moines Golden K	152	146	38	324
Indianola	24	23	24	791
Johnston	20	19	8	188
Merle Hay Urbandale	20	18	9	112
Totals	334	324		



	Oct 1 Members	May 31 Members	Service Projects	Total Service Hours
Division 17				
Atlantic	34	36	19	193
Clarinda	25	28	1	15
Council Bluffs Downtown	38	38	22	376
Glenwood	19	19	9	597
Hamburg	30	24		
Red Oak	25	25	2	35
Totals	171	170		
Division 18				
Columbus	27	24	8	258
Norfolk	94	105	30	466
Norfolk Morning	26	27		
Pierce	17	19	2	7
Wayne	36	41		
Totals	200	216		
Division 19				
Blair	37	37	12	114
Florence Omaha	19	26	38	276
Fremont	103	96	11	392
Fremont Golden K	29	28	38	462
North Omaha	21	19	328	4586
Omaha	100	83	6	110
Wahoo Area	46	49	19	359
Totals	355	338		
Division 20				
Bellevue	47	42	44	536
Bellevue-Offutt	57	56	76	976
Omaha Dundee	35	33		264
Omaha Golden K	72	79	127	4703
Omaha Loveland Golden K	55	57	3	1859
Omaha Westside	26	24	169	1303

	Oct 1 Members	May 31 Members	Service Projects	Total Service Hours
Division 20 (continued)				
Plattsmouth	23	26	1	2
Sarpy County Area	20	27		1949
Southwest Omaha	36	35	71	918
West Omaha Diamond K	49	44	7	1676
Totals	420	422		
Division 21				
Hickman	25	25	2	20
Lincoln	122	121	87	1939
Lincoln Golden K	23	15	9	1525
Lincoln Northeast	47	51	137	2264
Lincoln Sunrise	55	51	361	3509
Peru	13	17	6	63
Waverly Area	27	25	30	561
Totals	312	305		
Division 22				
Beatrice51	51	48	32	118
Beatrice Homestead Early Risers	23	25	68	454
Fairbury	33	30	6	77
Lincoln Capital City	66	69	7	1412
Lincoln Cornhusker	60	58	121	2198
Lincoln Southeast	28	30	24	188
Lincoln SouthPoint	14	13	41	162
Milford (Nebraska)	77	62	21	3366
Seward	86	78	167	2168
Seward Helping Hands	29	28	70	738
Totals	467	441		

**Kiwanis
International
Headquarters**



	Oct 1 Members	May 31 Members	Service Projects	Total Service Hours
Division 23				
Grand Island	46	47		
Grand Island A.M. Islanders	12	14	5	1233
Grand Island The Third City	8	8	30	189
Hastings	110	100		
Superior	11	11		
York	11	11		
Totals	198	191		
Division 24				
Holdrege (Millennium)	27	29	2	21
Kearney	36	33	1	117
Kearney Dobytown	49	52	134	4225
Kearney Golden K	107	99	90	5184
Lexington Plumcreekers	10	7	14	227
McCook	14	0		PR
North Platte	37	34	13	289
North Platte Buffalo Bill	35	38		207
North Platte Diamond K	26	21	10	2972
Ogallala Big Mac	24	24	60	1050
Totals	365	337		

Membership Growth Recognition

by Irv Omtvedt and Ron Peterson
Co-Chairs of Retention and Existing
Club Growth Team

Sixteen membership growth awards were presented at the District Convention in recognition of the new Kiwanis members inducted during the first half of the 2009-10 club year ending March 31, 2010.

The top three divisions with the largest divisional percentage club membership increases and with at least 50 percent of the clubs within the division recruiting one or more new members during this contest period were:

Largest Divisional Percentage Club Membership Increase Awards

	Division	# of New Members
1. Ron Taylor, Lt Governor	13	17
2. Steve McNally, Lt. Governor	18	10
3. Leo Lang, Lt. Governor	20	13

The following six clubs were recognized for increasing their net membership by at least five percent and for inducting the most new members during this contest period:

Club	President	Division	# of New Members
1. Onawa	Kenneth Tanner	5	10
2. NW Des Moines	Wesley Wilbur	13	8
3. Altoona	Elaine Castelline	16	8
4. Wahoo	Lisa Brichacek	19	5
5. Mason City River City	David Stine	1	4
6. Cedar Rapids	Daniel Breitbart	9	4

Seven Kiwanis members were recognized for recruiting at least three new members during the contest period. Those sponsors were as follows:

New Member Sponsor	Club	Division	# of New Members
1. Merle Bean	NW Des Moines	13	6
2. Ann Crawford	Onawa	5	4
3. Irv Omtvedt	Lincoln-Capital City	22	4
4. Zean Carney	Wahoo Area	19	4
5. Kathleen Biittner	Spirit Lake	3	3
6. Ernie Cupp	Spirit Lake	3	3
7. Hershel Staats	Lincoln Sunrise	21	3

A similar recognition program will be conducted for the second half of this fiscal year for new members inducted between April 1, 2010 and September 30,

(Continued on page 23)

(Continued from page 22)

2010. These awards will be presented at the 2011 Midyear Conference so all clubs still have time to participate in this contest period. The NE-IA District website has the complete details regarding requirements and awards.

Remember, additional Kiwanians means more hands will be available to better serve the needs of our children and our communities.

(Continued from page 17)

There are also "Trust Courses" at the camp, and more team building exercises now. The camp has also become very diverse, with students coming from small towns, large cities, the inner city, and a wide range of cultures.

What has motivated Ziska all these years? Simply put, Larry believes in the camp and he believes in the students. The most memorable moments for him are all the tears and hugs from campers.

Each year, at the District Convention, we remember those NE-IA Kiwanians who died during the past year. This year we remembered 89 men and women in our Sunday memorial service and video tribute.

Following are the names of our deceased members from Aug 1, 2009 through Aug 17, 2010.



- | | | | |
|------------------------|---------------------|--------------------|---------------------|
| Loyde Adams | Willie Craig | Vance James | Richard Pulse |
| Wally Agree | Mary Jo Curtis | Pam Johnson | Linda Reall |
| Bob Alford | Ed Dawson | Alvin Jordan | Merlyn Rehder |
| Sandy Authur | William Day | Anthony Kettler | Berdena Samuelson |
| John Aymer | Charles Dietz | Karen Kleine | James Shelley |
| Richard Ayres | Bruce Dixon | Sheldon Kushner | Charles Shorey |
| Aaron David Bear | Marilyn Draper | Kenneth Lee | Randy Simdorn |
| John Aymer | Dennis Ehlert | Sister Charmaine | Eric Sime |
| Benjamin | L. Eugene Evans | Dale Long | David Smith |
| Brian Bennett | Richard Fischer | Robert MacNaughton | Carl Spelts |
| Richard Boeke | Charles Gifford | Frederick Mast | Harold Teeple |
| Mary Borgheiick-Kranig | Bob Gingery | Vern McFadden | Harrison Tull |
| Henry Brandt Jr. | Art Goehring | Robert McNutt | John Van Der Linden |
| Jay Brekken | Chester Good | Marvin Meyer | Anthony Walenz |
| Mike Buntz | Eugene Grecian | Richard Milton | Richard Weeks |
| James Cannon | Patricia Green | Walter Morrison | David White |
| Gerald Caquelin | Phylis Hartman-Long | Doris Muller | Harry Whye |
| Roger Carlberg | Nick Herrman | Linda Nelson | Wes Wilbur |
| Vinston Carlson | Richard Hinderaker | Jim Nichols | James Willson |
| Joseph Cervenka | John Hoogendoorn | Kevin Orr | Bill Wilson |
| Kermit Chapman | Leland Imig | Bernard Payne | Philip Wilson |
| Fred Chiltum | Dr. Ben James | Robert Plummer | Thomas Wood |
| | | Paul Pospisil | Dr. Ralph Zolnosky |

Nebraska-Iowa Kiwanis
 501 Raider Drive
 Williamsburg, IA 52361



Calendar of Events for NE-IA Kiwanis District

For 2010-2011

- Nov 5-7 Nebraska Key Leader in Gretna, NE at Eastern Nebraska 4-H Camp
- Nov 12-14 Iowa Key Leader in St. Charles, IA at Wildwood Hills Ranch
- Dec 4-5 Key Club Midyear Conference at Marriott Hotel in West Des Moines, IA
- Jan 29 Midyear Conference, FFA Enrichment Center in Ankeny, IA
- Apr 2 Kiwanis One Day
- By Jun 1 Complete election of 2012-13 Lt. Governors
- By Jun 1 Complete election of 2011-12 Club Officers
- Jun 2-4 Kiwanis International President Sylvester Neal visits the NE-IA District
- Jul 7-10 Kiwanis International Convention, Geneva, Switzerland
- Aug 5-7 NE-IA District Convention at the Cornhusker Marriott in Lincoln, Nebraska

Kiwanian Schedule

Nov-Dec Theme: Community Service; Articles due by Nov 15, 2010

Jan-Feb: Theme: Membership Growth; Articles due: Feb 15, 2011

Mar-May: Theme: Service Leadership; Articles Due: Apr 15, 2011

Jun-Jul: Theme: Fun Raising Articles Due: June 15, 2011



Kiwanian

Vol. 55, No. 6 September–October 2010
 (USPS 376-560)

The *Kiwanian* is published six times a year in December, February, April, June, August, and October.

POSTMASTER: Address Changes
To: NE-IA Kiwanis, 501 Raider Drive, Williamsburg, Iowa 52361. Periodicals postage paid at Williamsburg, Iowa, and at additional mailing offices.

MANAGING EDITOR: Frank Murphy, 501 Raider Drive, Williamsburg, Iowa 52361, phone: 319-331-9926, e-mail: secretary@nikiwanis.org.

ADDRESS CHANGES

Mailing lists for the *Kiwanian* are maintained by the NE-IA District Office. If you have moved, or are about to move, please submit a change of address to your club secretary promptly and ask him/her to notify us, as well as Kiwanis International.

This will assure continuity of delivery and save the district hundreds of dollars in fees charged by the Postal Service for incorrect addresses each year. **Thanks!**



Kiwanis Newsletters and Leadership Directory are placed on the NE-IA Kiwanis District website (www.ne-ia.kiwanisone.org).