



Kiwanis Club of Madison West

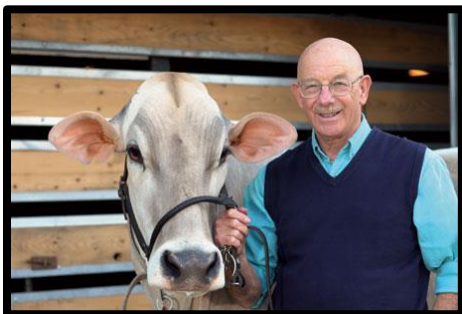
KIWANOGRAM

Guests:

Bob Cole, guest of **Bob Richardson**; **Charlie Price**, division lieutenant governor; and Nadine Goff, a writer with an interest in preparing an news article about our Christmas Pageant and its history.

Program:

Ed Janus, a freelance audio and radio journalist, described how dairying started in Wisconsin and became a very important element of our state economy. He helped found the Madison Muskies and helped start Capital Brewery. Ed spent two years on a 30 cow farm in the early 1970's. In early Wisconsin agriculture, the leading agricultural enterprise was wheat production when it was exported outside the state to the east coast. Because of the wheat export, wheat farmers mined the soil of nutrients and moved west to more fertile land. Dairying became the agricultural enterprise which provided an opportunity to restore the soil nutrients and provide a profit. As a result the agriculture infrastructure changed with addition of milk processing (cheese) plants and the farm family member's role in farming.



Ed Janus, Creating a Dairyland

Up coming Programs

Date	Program	Greeter	Opening Word
December 20	Pancreatic Cancer Research Dr. Sam Lubner	Virgil Jurens	Fred Ross
December 27	Roundtable	Marv Beatty	TBA
January 3	Cities of Germany Ron Schuler	TBA	TBA

December 13, 2013

Presiding: Bill Grabel
 Checkpoint: Marv Beatty, Fred Ross
 Opening word: Boomer
 Music: Boomer and Mary
 Raffle Winner: Jim Wiederhoeft
 ASA Ski Program

Announcements:

Bill Grabel presented holiday gift to Eric and Pat from Gaylord Catering in appreciation for their dedication to serving lunch every Friday.

Bill Grabel announced the foundation trustee meeting is scheduled for Tuesday, December 17, at the Lussier Center on Gammon Road. Members are welcome.

Mary Mennes announced we still have popcorn available from our Pancake Breakfast. Most of the remaining popcorn sold after the meeting but there are still a few cans remaining. Mary received numerous tips today which she contributed to our ASA Ski Scholarship program.

(More announcements on page 2)

Important Dates

Date	Event
December 19	Foundation Meeting
December 27	Roundtable Meeting
January 8	Board Meeting, Vitense

Meeting Time and Location

Fridays, 11:45 am
Covenant Presbyterian Church
326 South Segoe Road
Madison, WI
Web site: madisonwestkiwanis.com

Announcements

Randy Hansen thanked members who volunteered for setup, ushering and takedown at the Christmas Pageant. Members volunteering for setup on December 6 were **Tom McCrill, Bruce Dewey, Jim Danner, Randy Grobe, John Schwab, George Meyer, Terry Stewart, Randy Hansen, Carrol Spencer, Ken Saville, Bruce Hoehne, Rich Grooms, Ed Reisch, and Chuck Stumpf.** Members ushering on Sunday were **Scott Kramer, Bobette Heller, Terry Stewart, Randy Hansen, Ned Schmitt, Ken Saville, Harold Green, and John Thomas.** Take down volunteers on Sunday were **Jim Danner, Randy Grobe, Terry Stewart, Randy Hansen, Bill Grabel, Ken Saville, Bruce Hoehne, Jim Wiederhoeft, and Ed Reisch.** Others volunteering were Gary Smith, three Edgewood Circle K members and fifteen members of the Madison West High School Key Club.



Setting up the stage for the Christmas Pageant

Club Officers (2012-2013)

President:	Bill Grabel
Vice President	Carrol Spencer
Secretary	Ron Schuler
Treasurer:	Randy Grobe
Past President	Bruce Hoehne

Board of Directors

Bonnie Hansen	Mary Mennes
Ed Reisch	Al Wearing
Bill Battista	Tom McCrill

Ken Saville announced he had the Christmas candy (chocolate covered macadamia nuts) from the Monroe Kiwanis Club. If you have picked up your candy order contact Ken at 249-1161 or ksaville@wi.easterseals.com.

Charlie Price, our division lieutenant governor, reported the district is looking for more club support for the district Key Leader program for high school age students held in September each year at Camp Wawbeek. In the past our club has sponsored students but not in 2013.

Madison East is looking for programs for the Aktion Club on January 23, April 10 and 24, and May 22. If interested contact Sibyl Morgan, sammorgan@charter.com.



Mary Mennes provided music before the program